

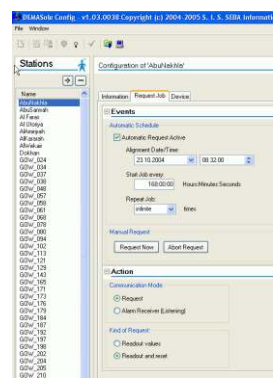
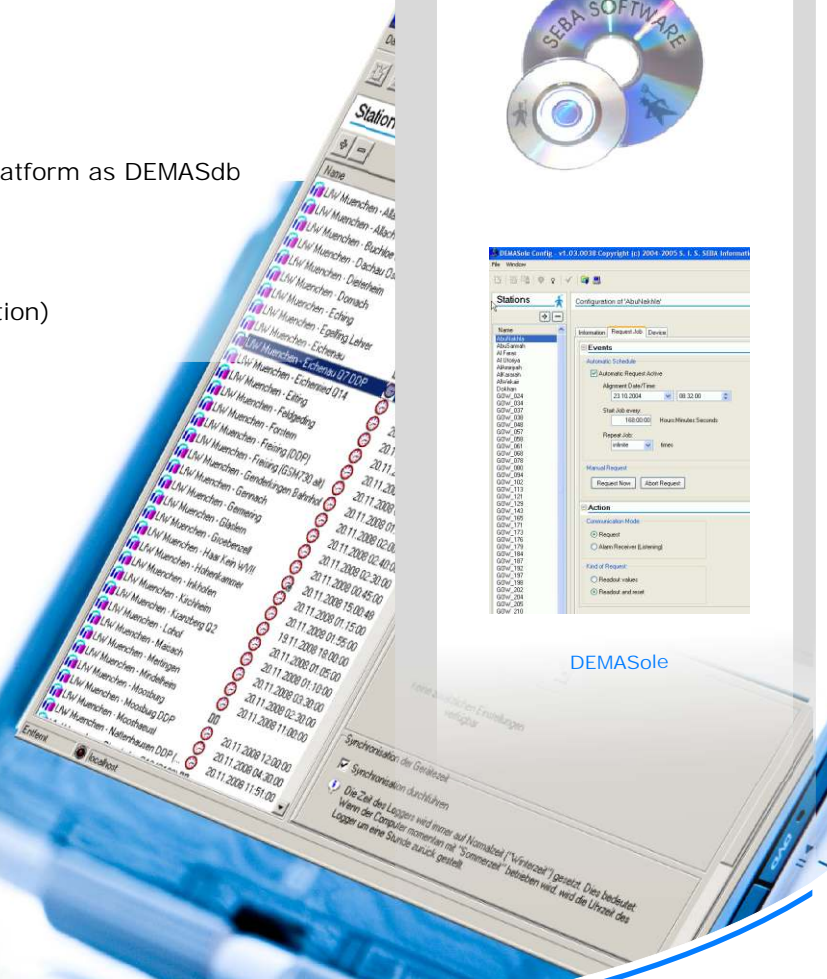


DEMASole

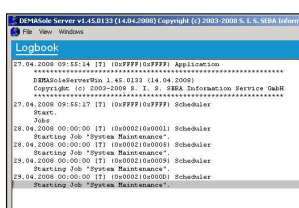
Software for Automatic Online Data Retrieval of Field Stations

Key Features:

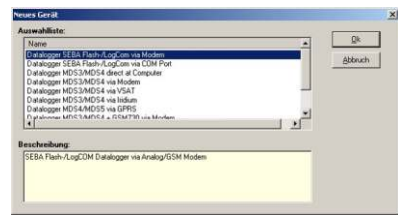
- Multi-protocol engine
- Standardized consolidated operation - same platform as DEMASdb
- Optimum use of existing hardware resources
- Autom. recording of all activities (Logbook)
- Reports
- Autom. ASCII data export and SMS alarm (option)



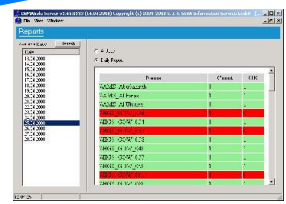
DEMASole



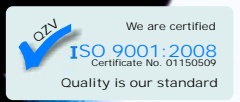
Logbook



Add new device



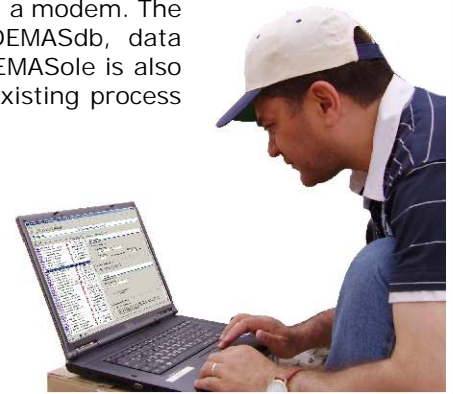
Remote Configuration



DEMASole - General

DEMASole is the expansion module of DEMASdb serving for online call of measuring values. It controls measuring systems that are equipped with data transmission e.g. a modem. The data collection online is effected automatically. In combination with DEMASdb, data transmissions are started directly using the user interface of DEMASdb. DEMASole is also available as a stand-alone version and thus enables the integration into existing process control systems.

DEMASole is divided into two components: the so-called "call module" and the "configuration module". Using the configuration module, online measuring stations with their respective access parameters (request job, type of connection) are set up. The configuration file can be exported in *.XML format for further use on other PCs via authorized online access, without any further modifications. The call module is effected on a computer with access to the hardware resources (telephone modem etc.).



Data Collection Online

Multiprotocol Engine - SEBA-MDS, DDP



When measuring systems communicate with each other, a variety of protocols have been developed and are still used.

DEMASole is multi-protocol capable. So the measuring values stored in data loggers of different manufacturers can be read out. Not only instruments made by SEBA HYDROMETRIE using the standard protocols SEBA-MDS and DDP but also instruments and systems of other manufacturers.

Management of Resources

DEMASole uses exiting resources optimally. It can realise several calls simultaneously, it also automaticall recognizes free capacities. This can be achieved with the integrated management of resources, which keeps an account of the instantaneous status of utilisation.

In case of large measuring systems, for which several modems are necessary to download the measuring values, it automatically uses the unused (free) modem for a call. Contrary to rigid allocation, more stations can be connected online with the same quantity of telephone lines.

New drivers for call of yet unknown recording systems can be implemented within a short time and can be placed at the customer's disposal.

Logbook - Export function

During the log-in procedure and during the data transfer the software automatically starts a log book function. The entire data transmission is stored in a file. In case of an error or data transmission problems, this file is the foundation for a successful fault diagnosis and trouble shooting.

An automatic export function is available. Downloaded and transmitted data are automatically stored in a spool directory as a temporary file. Those files can be further processed using additional software.

The right is reserved to change or amend the foregoing technical specification without prior notice..



SEBA Hydrometrie GmbH & Co. KG
Gewerbestr. 61a • 87600 Kaufbeuren • Germany
Phone: +49 (0)8341 / 9648-0
Fax: +49 (0)8341 / 9648-48
E-Mail: info@seba.de
Internet: www.seba.de

represented by: