



# Shear strength test apparatus

## 08.68 Shear test apparatus for measuring soil shear strength

The shear test apparatus measures the shear stress of an undisturbed soil sample.

During shearing at a constant shear velocity and under 1) consolidated drained (CD), 2) unconsolidated, undrained (UU) or 3) unconsolidated drained (UD) conditions the matric potential and shear forces at a given vertical stress are measured simultaneously.

The apparatus operates under computer control using multifunctional software for executing measurement protocols and visualised data presentation.

This equipment measures the soil shear stress in accordance to EN17892-10 and ASTM D3080-98 considering the following restrictions:

- The maximum specimen load is 600 kPa for a 100 mm sample ring
- Tests are conducted in non water immersed condition
- Please consult instrument specification for detailed information in case of accreditation



## Applications

- Soil science
- Soil mechanics
- Soil erosion
- Environmental research
- Basic material research

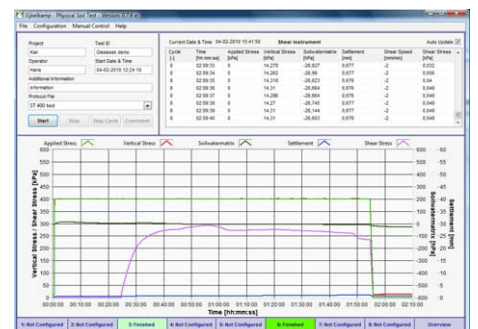
## User groups

- Laboratories
- Research institutes
- Educational institutes
- Universities



## Features

- User-friendly and easy operation
- Accurate measurement principles
- All in one shear and compression measurements
- Sample diameter 100 mm, height 30 mm
- Software-controlled measurement protocols
- Simultaneously operation of up to 8 instruments
- Graphical instrument overview and data zoom functions
- Calibration functions
- Data file export i.e. Excel
- Upgradable for dynamic multistep operation with advanced sensor based experiment control
- Excellent price-quality-functionality ratio
- Developed in cooperation with Christian Albrechts University zu Kiel



## All it takes for environmental research

P.O. Box 4, 6987 ZG Giesbeek,  
The Netherlands  
© October 2012

T +31 313 88 02 00  
F +31 313 88 02 99

E info@eijkelp.com  
I www.eijkelp.com



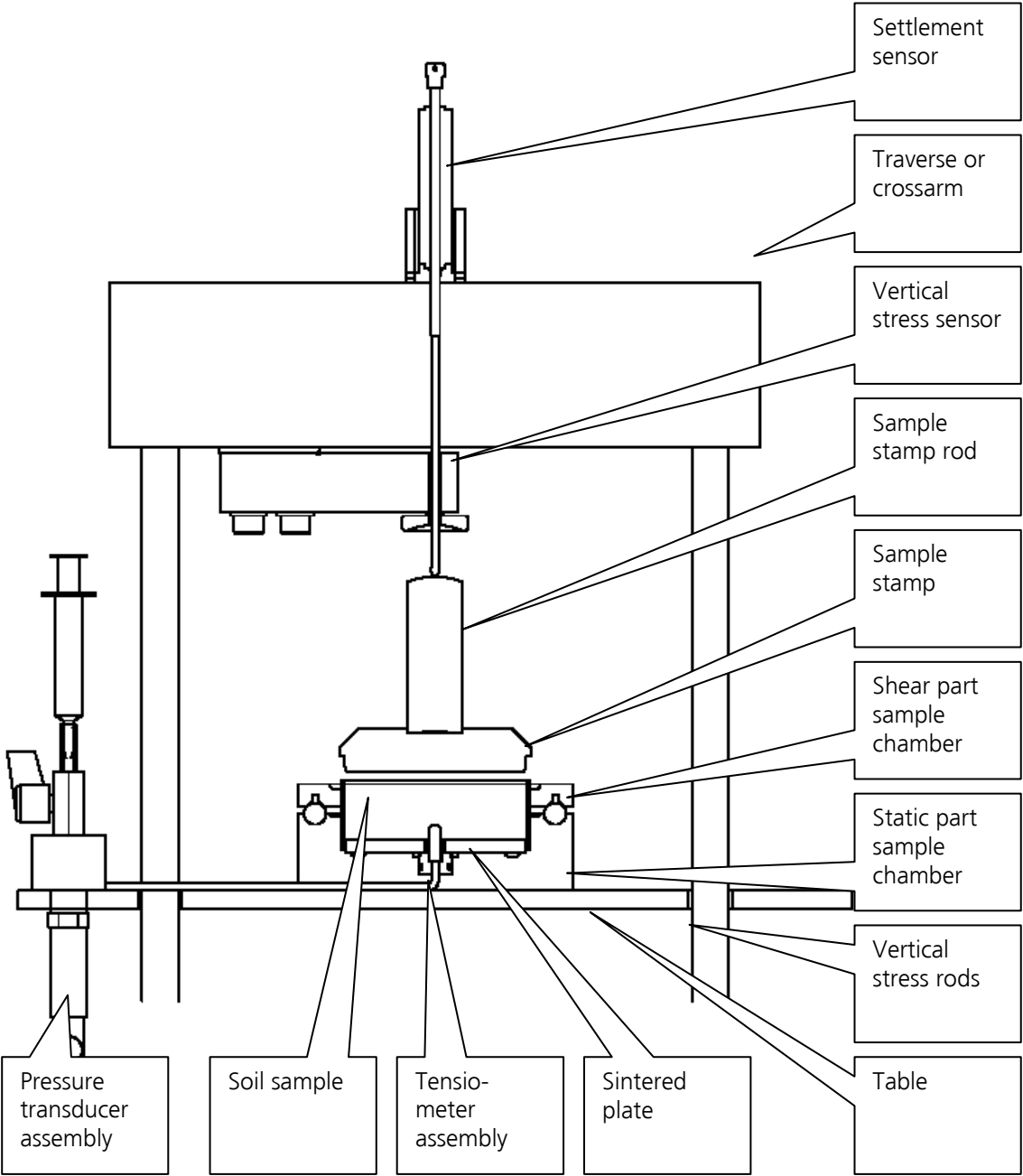
a Royal Eijkelp Company  
AP.08.68.E

## Technical specifications

	<b>Range</b>	<b>Resolution</b>	<b>Accuracy</b>
<b>Stress vertical</b>	0-600 kPa	0.1 kPa	2 kPa
<b>Response speed</b>	<10 sec. @1% end value (adaptable by PID controller parameters)		
<b>Stress horizontal</b>	0-400 kPa	0.1 kPa	2 kPa
<b>Shear speed</b>	0-2 mm/min	0,01 mm/min	0.1 mm/min
<b>Shear stroke</b>	20 mm		
<b>Matric potential</b>	-1000...+1000 hPa	0.1 hPa	2 hPa
<b>Compression</b>	0-30 mm	0.001 mm	0.1 mm
<b>Sample log rate</b>	0.1...60 sec.		
<b>Soil sample diam.</b>	100 mm		
<b>Pressure-in max.</b>	0.7 Mpa / 7 bar		
<b>Force max.</b>	5 kN		
<b>Stress out max.</b>	600 kPa		
<b>Mains supply</b>	100-250 volts AC		
<b>Mains frequency</b>	47-63 Hz		
<b>Power consumption</b>	0.8 W		
<b>Environmental conditions:</b>			
<b>Temperature</b>	15-35 °C		
<b>Humidity</b>	20-80% RH (non condensing)		
<b>Dimensions</b>	45 x 75 x 125 cm		
<b>Software language</b>	English		
<b>P.C. connection</b>	USB		

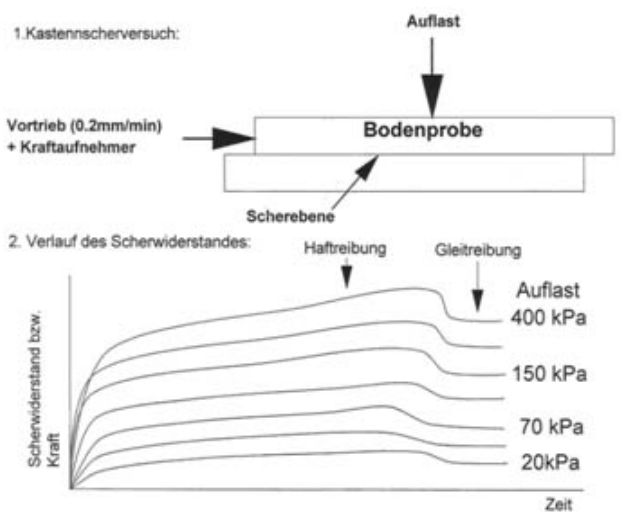
All of the information in this brochure is provisional. We reserve the right to alter equipment, procedures and specifications.

# Instrument layout



## Result evaluation by Mohr - Coulomb

To determine the Mohr-Coulomb failure line at least 4-5 samples need to be tested each with a different normal stress. The maximum shear resistance is determined from a shear stress-displacement curve and plotted as a function of the corresponding normal stress. Plotting all pairs gives the Mohr-Coulomb failure line in which the slope and intercept are the angle of internal friction and cohesion, respectively. The boundary conditions can be defined very flexible according to the posed experimental question.



3. Mohr Coulomb'sche Bruchgerade:

