

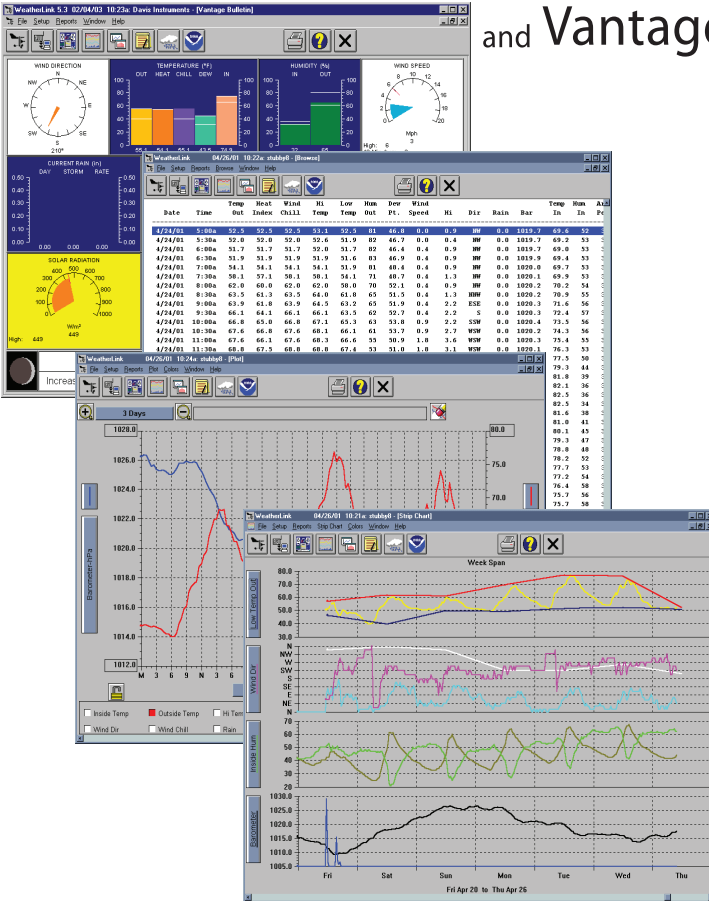
DAVIS

WeatherLink[®]

For Vantage Pro[®]

Vantage Pro2[™]

and Vantage Vue[™]



Getting Started Guide

Some datalogger models may include code based on version 4.2.0 of the FreeRTOS operating system. Complete FreeRTOS source code may be downloaded from <http://www.freertos.org>.

In addition, some datalogger models may include code based on the uIP TCP/IP stack pursuant to the following license:

Copyright (c) 2001-2006, Adam Dunkels and the Swedish Institute of Computer Science All rights reserved.

Redistribution and use in source and binary forms, with or without modification, are permitted provided that the following conditions are met:

1. Redistributions of source code must retain the above copyright notice, this list of conditions and the following disclaimer.
2. Redistributions in binary form must reproduce the above copyright notice, this list of conditions and the following disclaimer in the documentation and/or other materials provided with the distribution.
3. The name of the author may not be used to endorse or promote products derived from this software without specific prior written permission.

THIS SOFTWARE IS PROVIDED BY THE AUTHOR 'AS IS' AND ANY EXPRESS OR IMPLIED WARRANTIES, INCLUDING, BUT NOT LIMITED TO, THE IMPLIED WARRANTIES OF MERCHANTABILITY AND FITNESS FOR A PARTICULAR PURPOSE ARE DISCLAIMED. IN NO EVENT SHALL THE AUTHOR BE LIABLE FOR ANY DIRECT, INDIRECT, INCIDENTAL, SPECIAL, EXEMPLARY, OR CONSEQUENTIAL DAMAGES (INCLUDING, BUT NOT LIMITED TO, PROCUREMENT OF SUBSTITUTE GOODS OR SERVICES; LOSS OF USE, DATA, OR PROFITS; OR BUSINESS INTERRUPTION) HOWEVER CAUSED AND ON ANY THEORY OF LIABILITY, WHETHER IN CONTRACT, STRICT LIABILITY, OR TORT (INCLUDING NEGLIGENCE OR OTHERWISE) ARISING IN ANY WAY OUT OF THE USE OF THIS SOFTWARE, EVEN IF ADVISED OF THE POSSIBILITY OF SUCH DAMAGE.

FCC Part 15 Class B Registration Warning

This equipment has been tested and found to comply with the limits for a Class B digital device, pursuant to Part 15 of the FCC Rules. These limits are designed to provide reasonable protection against harmful interference in a residential installation. This equipment generates, uses and can radiate radio frequency energy and, if not installed and used in accordance with the instructions, may cause harmful interference to radio communications. However, there is no guarantee that interference will not occur in a particular installation. If this equipment does cause harmful interference to radio or television reception, which can be determined by turning the equipment on and off, the user is encouraged to try to correct the interference by one or more of the following measures:

- Reorient or relocate the receiving antenna
- Increase the separation between the equipment and receiver
- Connect the equipment into an outlet on a circuit different from that to which the receiver is connected
- Consult the dealer or an experienced radio/TV technician for help.

Changes or modifications not expressly approved in writing by Davis Instruments may void the user's authority to operate this equipment.

EC EMC Compliance

This product complies with the essential protection requirements of the EC EMC Directive 2004/108/EC.

Product Number: 6510SER, 6510USB, 6540, 6544, 6550, 6555, 6560 Part Number: 7395.210
WeatherLink® for Vantage Pro®, Vantage Pro2™, and Vantage Vue Rev. F November 11, 2009
Vantage Pro, Vantage Pro2, WeatherLink, and Vantage Vue are trademarks of Davis Instruments Corp.
Hayes is a registered trademark of Hayes Microcomputer Products, Inc. Windows is a trademark of Microsoft Corporation.

© 2009 Davis Instruments Corp. All rights reserved.
Information in this document is subject to change without notice.



3465 Diablo Avenue, Hayward, CA 94545-2778 U.S.A.
510-732-9229 • Fax: 510-732-9188
E-mail: info@davisnet.com • www.davisnet.com

Welcome to WeatherLink®

The data logger and WeatherLink® software let you connect a Davis Vantage Pro®, Vantage Pro2™, or Vantage Vue console, or Weather Envoy™ to your personal computer so you can store, view, plot, analyze, export, and print weather data collected by the weather station.

Contents of Package

The WeatherLink software is available with three connection types, USB, WeatherLinkIP, and serial. There are also multiple versions of the serial data logger. Verify which data logger you have.

WeatherLink With USB Connection (# 6510USB)

The WeatherLink package with the USB connection contains the following:

- Data logger with USB mini-connector
- 8' (2.4 m) USB Mini-B connector cable
- WeatherLink Software CD

WeatherLinkIP (# 6555)

WeatherLinkIP is a simple way to post data from your console or Envoy directly to the Internet.

The WeatherLinkIP package contains the following:

- WeatherLinkIP data logger
- 5' (1.5 m) Ethernet cable
- WeatherLink Software CD

WeatherLink with Serial Port Connection (# 6510SER)

The WeatherLink package with the serial connection contains the following:

- Data logger with serial connector
- 8' (2.4 m) cable with connector
- 9-pin (DB-9) PC COM Port Adapter — Use the 9-pin adapter to connect the data logger to a 9-pin serial port.
- Loopback connector — The loopback connector is a short piece of cable with a phone plug at one end and a red plastic cap at the other. The loopback connector can be used to determine what serial ports are available for the data logger and for troubleshooting serial communications problems.
- WeatherLink Software CD

Optional Accessories for Serial Port Connection

The following optional accessories, designed for use with WeatherLink for Serial, are available from your dealer or may be ordered directly from Davis.

- Telephone Modem Adapter — For data transmission from the data logger using a modem
- Straight Through 4-Conductor Extension Cable — For more flexibility in placing your console, add one 40' (12 m) extension cable to extend the distance between your station and the computer (48' (14.4 m) maximum).

WeatherLink for APRS (# 6540)

WeatherLink for APRS gives you the ability to connect WeatherLink to your ham radio. The WeatherLink for APRS package has the same contents as WeatherLink with Serial plus:

- 25-pin TNC modem connector

WeatherLink for Alarm Output (# 6544)

WeatherLink for Alarm Output gives you the ability to set alarms that turn devices, such as heaters and fans on and off. The WeatherLink for Alarm Output package has the same contents as WeatherLink with Serial plus:

- Alarm Output data logger with connector block

WeatherLink for Emergency Response (# 6550)

WeatherLink for Emergency Response connects the WeatherLink software to CAMEO® Aloha software. The WeatherLink for Emergency Response package has the same contents as WeatherLink with Serial plus:

- Emergency Response streaming data logger

WeatherLink for Irrigation Control (# 6560)

WeatherLink for Irrigation Control uses your weather station to turn your irrigation system on or off. The WeatherLink for Irrigation Control package has the same contents as WeatherLink with Serial plus:

- Irrigation Control data logger with connector block

Computer Requirements

WeatherLink software is compatible with computers running Windows 2000 or later.

The amount of space necessary for the data files depends on the archive interval. Database files containing data stored at a 30-minute archive interval require approximately 36K of disk space per month of data. The file size grows depending on the archive interval. For example, data stored at a 1-minute interval requires approximately 1 MB/month while the data stored at a 2-hour interval requires approximately 9K/month.

Other requirements include:

- **Windows-Compatible Display** — High (16-bit) color setting recommended

USB Hardware requirements

- One free USB port.

WeatherLinkIP Hardware requirements

- Broadband Router or switch with one free port.
- An “Always-on” connection to the Internet — A high speed DSL or cable internet connection that maintains constant connection to the internet.

Serial Port Connection Hardware Requirements

Listed below are the hardware requirements for creating a local connection and a remote connection.

Local Connection Hardware Requirements

- One free serial port.

Remote Modem Connection Hardware Requirements

In addition to the provided hardware and the computer equipment listed above, the following hardware is required for a remote modem connection:

- **One external modem to connect to the data logger** — The modem must be Hayes®-compatible and run at 1200, 2400, 4800, 9600, 14400, or 19200 Baud Rate.
- **One internal or external modem connected to your computer** — The modem must be Hayes®-compatible and run at 1200, 2400, 4800, 9600, 14400, or 19200 Baud Rate.
- **Telephone Modem Adapter** — The Telephone Modem Adapter (#6533) provides the connection between the data logger and the modem.

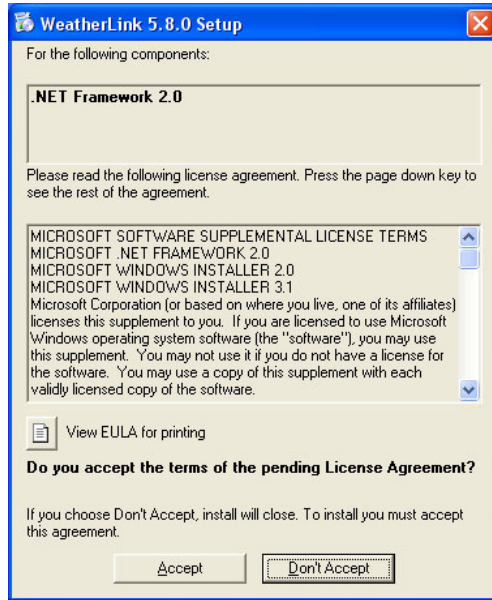
Software Installation

Follow the steps below to install the WeatherLink software.

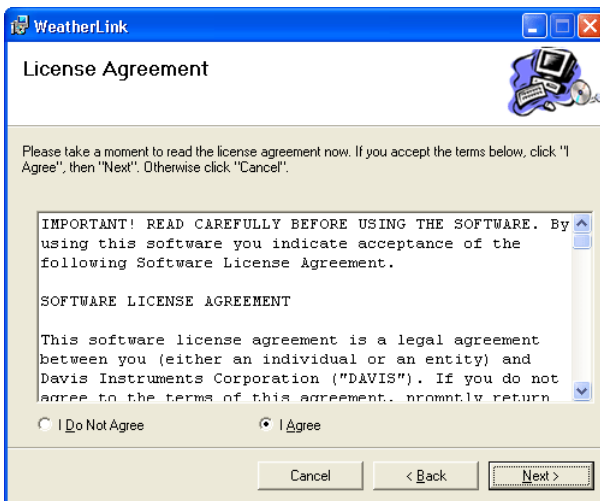
1. Place the WeatherLink software CD in your CD ROM drive.

The install program should start automatically. If the install program does not start, select **Run** from the **Start** menu, type D:\SETUP (or the correct letter for your CD ROM drive), and click **OK** to begin the installation.

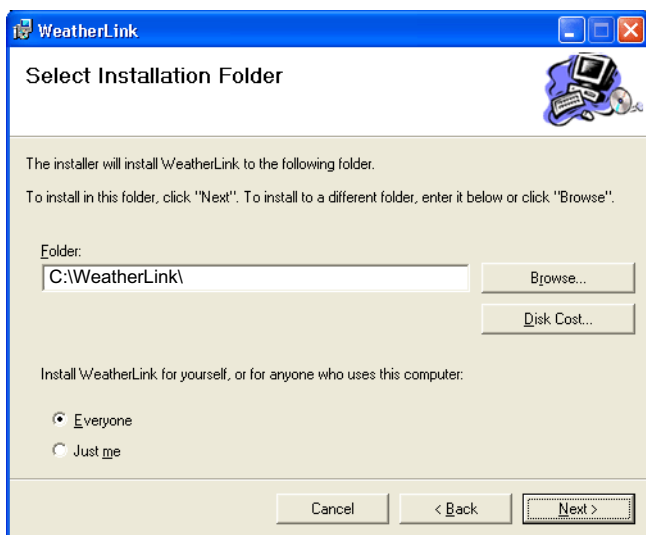
A series of dialog boxes display, prompting you to complete the WeatherLink installation. The **WeatherLink Setup for .NET Framework** dialog box may display.



- WeatherLink 5.8 requires the Microsoft .NET Framework 2.0 to operate. If your computer does not have it installed, the above dialog box displays.
2. Click **Accept** to install the necessary components. The **License Agreement** dialog box displays.



3. Review the license agreement, click **I agree** and click **Next**. The **Choose Destination Location** dialog box displays.



4. Select the default location to install WeatherLink or find another location by clicking **Browse**.

Note: If you are upgrading your software from a previous version, click **Browse** to search for the directory or folder of the previous version of WeatherLink.

5. Click **Next** once you have selected a location. The **Confirm Installation** dialog box displays.
6. Click **Next** to start the installation. The **Installing WeatherLink** dialog box displays the installation progress. The **Installation Successful** dialog box displays once the software installation has been completed.

Note: During the installation process, the USBXPress Device Driver and the Bridge Driver, two drivers required for USB connections are installed automatically.

7. Click **OK**. WeatherLink has been installed successfully.

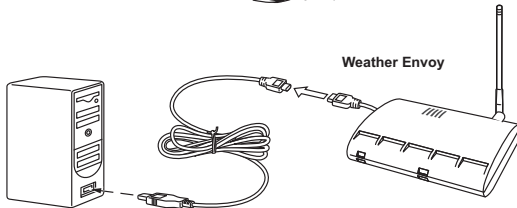
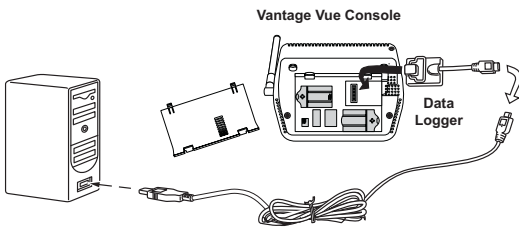
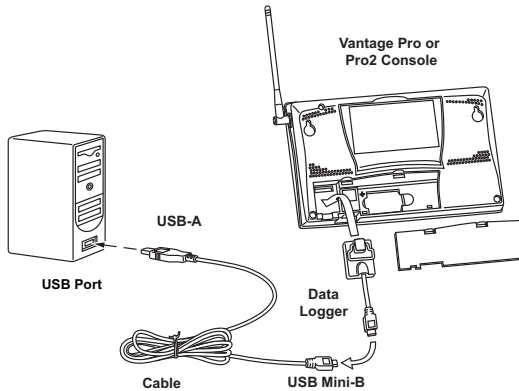
USB Hardware Installation

Complete the local USB hardware installation by using the instructions below:

1. Locate the console or Weather Envoy that will receive the WeatherLink USB connection.
2. **For consoles only:** Enter the console's Setup Mode by pressing and holding DONE, then pressing the down arrow (-). Entering Setup Mode ensures that the station is not writing any data and saves the current daily weather information to memory.
3. Remove the battery cover, the batteries, and AC-power adapter, if present.

Note: Failure to remove power to the console or Envoy before installing the data logger may cause damage to the data logger or console. Plugging or unplugging the data logger while power is applied can lock up or damage the data logger.

4. Firmly insert the USB data logger into the large receptacle marked **EXPANSION** inside the battery compartment.
5. Locate a free USB port on your computer and connect the USB connector to the port.



6. Insert the USB - Mini B connector on the USB connector of the USB data logger. The connection between the console and the computer can be extended up to 16' (5 m) using a USB-to-USB connector cable.

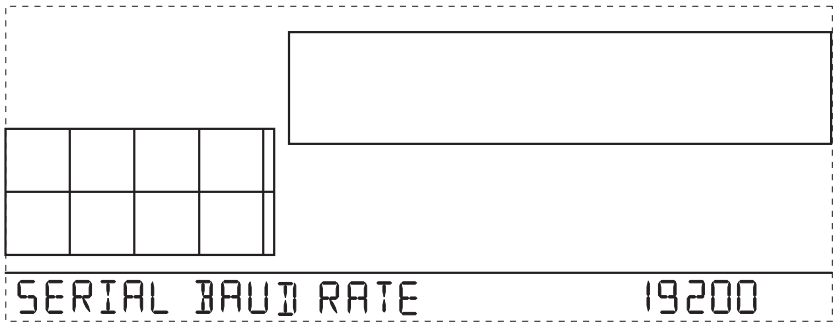
Note: Do not attempt to use more than a 16' extension cable, or the data logger may have difficulty communicating with the computer.

7. Reconnect the AC adapter, if present and then reinsert the batteries.
The console beeps three times; each beep occurring within one second of the others. Once power has been returned to the console, the Setup Mode is automatically displayed.
The Weather Envoy beeps two times, also occurring within one second of each other.
 8. Check the Baud Rate setting on the console. The default value for the Baud Rate setting is 19200.
-

Note: If you have a Weather Envoy, do not change this Baud Rate value in the WeatherLink software. The Baud Rate setting on the console or on the Weather Envoy (always 19200) must be set the same as the WeatherLink Baud Rate setting. See the WeatherLink Online Help for more information.

To display the Baud Rate settings on a Vantage Pro or Vantage Pro2 console, make sure the data logger is installed and then continue using the following procedures:

- Enter the console Setup Mode by pressing and holding DONE, then pressing the (-) key.
- Use the BAR and DONE to scroll to the Baud Rate settings screen:



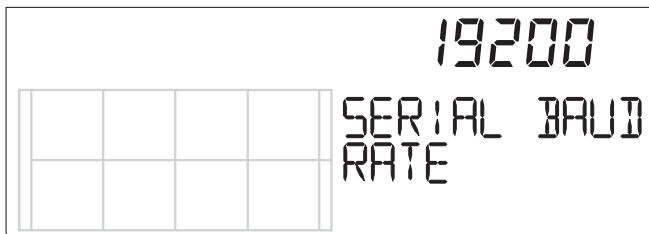
Use the up (+) and down (-) arrows to change the Baud Rate setting, if needed. Press and hold DONE to return the console to the current weather mode.

- Use the fastest Baud Rate your computer can handle. 19200 is the fastest Baud Rate available and is the default setting on the console.
- Press DONE when you have the correct Baud Rate on the console screen.

To display the Baud Rate settings on a Vantage Vue console, make sure the data logger is installed and then continue using the following procedures:

- Enter the console Setup Mode by pressing and holding DONE, then pressing the (-) key.
-

- Press BAR to get to the Baud Rate settings screen:



Use the up (+) and down (-) arrows to change the Baud Rate setting, if needed. Press and hold DONE to return the console to the current weather mode.

- Use the fastest Baud Rate your computer can handle. 19200 is the fastest Baud Rate available and is the default setting on the console.
- Press and hold DONE when you have the correct Baud Rate on the console screen

Note: The data logger does not require a constant connection with a computer to continue logging and storing data. Although the data logger should remain connected to the console at all times, the data logger needs to be connected to the computer only when data is being downloaded or when the computer is actively using data from the data logger. The data logger and console can be disconnected from the computer if they are placed in a location where the data logger cable cannot reach. However, WeatherLink's bulletin, summary, or other real-time window displays are accessible only if the data logger and console are connected to the computer.

WeatherLinkIP Hardware Installation

Complete the WeatherLink IP hardware installation by using the instructions below:

1. Locate the console or Weather Envoy that will receive the WeatherLinkIP connection.
2. **For consoles only:** Enter the console's Setup Mode by pressing and holding DONE, then pressing the down arrow (-). Entering Setup Mode ensures that the station is not writing any data and saves the current daily weather information to memory.
3. Remove the battery cover, the batteries, and AC-power adapter, if present.

Note: Failure to remove power to the console or Envoy before installing the data logger may cause damage to the data logger or console. Plugging or unplugging the data logger while power is applied can lock up or damage the data logger.

4. Firmly insert the WeatherLinkIP data logger into the large receptacle marked **EXPANSION** inside the battery compartment.
 5. Connect one end of the Ethernet cable to the WeatherLinkIP data logger.
 6. Locate a free Ethernet port on your broadband or DSL router/hub and connect the cable to the port.
 7. Reconnect the AC adapter and then reinsert the batteries.
-

Note: A console using a WeatherLinkIP data logger requires use of the AC-power adapter. Battery power can be used for short-term backup power in the event of a power outage, but a console or Envoy with WeatherLinkIP should use the AC-power adapter as its main source of power.

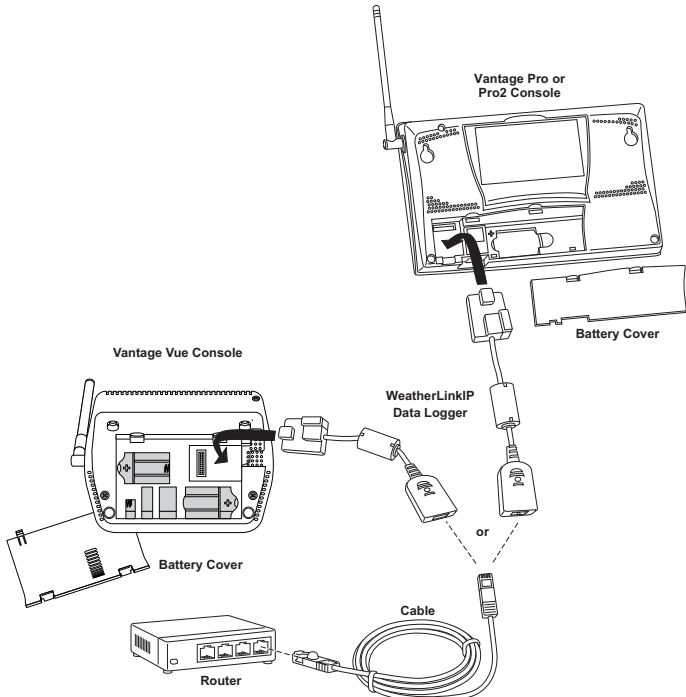
The console beeps three times; each beep occurring within one second of the others. Once power has been returned to the console, the Setup Mode is automatically displayed.

The Weather Envoy beeps two times, also occurring within one second of each other.

8. Check the Baud Rate setting on the console. The default value for the Baud Rate setting is 19200. This value is required when using WeatherLinkIP.
9. Write down the Device ID and Key located on the side of the WeatherLinkIP data logger for further use.

The Device ID (DID) and Key uniquely identify your data logger on the WeatherLink Network (www.weatherlink.com). They are both required to create a login on WeatherLink.com and are used to connect the WeatherLinkIP data logger to the software.

Note: Because WeatherLink IP is continuously uploading current weather information to the www.weatherlink.com, leave the WeatherLinkIP and console connected to your router at all times.



WeatherLinkIP and Weatherlink.com

The WeatherLinkIP data logger provides you with the same archiving features as a serial or USB data logger but also automatically uploads your Vantage Pro or Vantage Pro2 console or Envoy information to a web server provided by Davis Instruments that lets you see your weather data via the internet without having to set up your own web page. In addition, your weather data is automatically saved to our web servers which provide four times the memory storage of a data logger.

Once you have connected the WeatherLinkIP data logger to your broadband router or switch, the data logger starts uploading your current weather information to the web server. To access your weather information over the internet:

1. Go to www.weatherlink.com
2. Read the license agreement and register your account using the Device ID and Key information provided on the data logger.
3. Create your account.
4. View your current weather data on the web.

Serial Port Hardware Installation

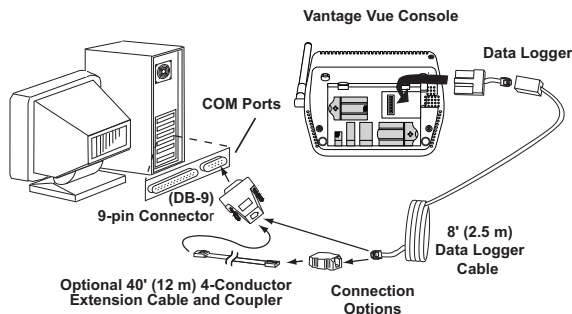
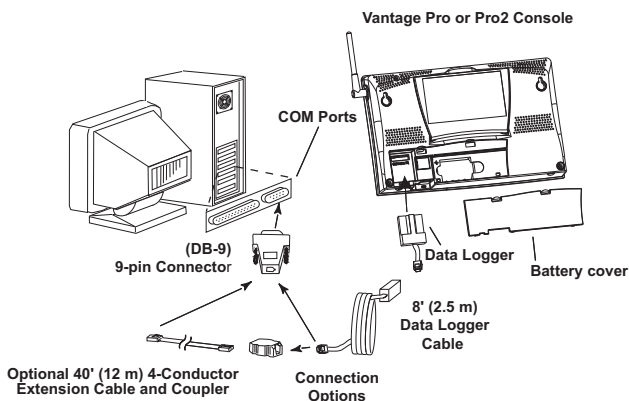
A serial port connection can be installed so that WeatherLink uses a direct, local connection between the computer and console, or so that WeatherLink uses a modem connection to a remote weather station. Installation for each connection type differs, and is explained separately below.

Local Connection Installation

1. Find the weather station console that will receive the WeatherLink serial connection.
2. **For consoles only:** Enter the console's Setup Mode by pressing and holding DONE, then pressing the down arrow (-) key. Entering Setup Mode ensures that the station is not writing any data and saves current daily weather information to memory.
3. Remove the battery cover and remove the batteries and AC-power adapter, if present.

Note: Failure to remove power to the console or Weather Envoy before installing the data logger may cause damage to the data logger or console. Plugging or unplugging the data logger while power is applied can lock up or damage the logger.

4. Firmly insert the data logger with serial connector into the receptacle marked EXPANSION inside the battery compartment.



Connecting your Computer Directly to your Weather Station

5. Guide the data logger cable through the square slot below the receptacle.
6. Reconnect the AC adapter, if present, and then reinsert the batteries.
The console beeps three times; each beep occurring within one second of the others. Once power has been returned to the console, the Setup Mode is automatically displayed.
The Weather Envoy beeps two times, also occurring within one second of each other.
7. Replace the battery cover so that the data logger cable exits through the square slot.
8. Locate a free serial port on the back of the computer and connect the DB-9 pin connector to the port.
9. Insert the cable plug at the end of the short cable coming from the data logger into the receptacle on the end of the 8' cable. Then insert the cable plug on the end of the 8' cable into the DB-9 connector.
The cable connecting the data logger to the computer is 8' (2.4 m) long. Use a 40' (12 m) straight-through 4-conductor extension cable to extend the connection between the console and computer. Do not attempt to use more

than 40' of extension cable, or the data logger may have difficulty communicating with the computer.

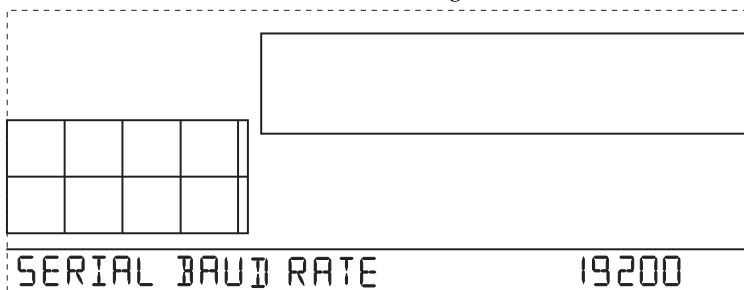
Configure the console so that data is transferred between the console data logger and the computer at the same rate.

10. Check the Baud Rate settings on the console.

Note: If you have a Weather Envoy, do not change this Baud Rate value in the WeatherLink software. The Baud Rate setting on the console or on the Weather Envoy (always 19200) must be set the same as the WeatherLink Baud Rate setting. See the WeatherLink online help for more information.

To display the Baud Rate settings on a console, make sure the data logger is installed and then continue using the following procedure:

- Enter the console Setup Mode by pressing and holding DONE, then pressing the down arrow (-).
- Press BAR to scroll to the Baud Rate settings screen:



Use the up (+) and down (-) arrows to change the Baud Rate setting, if needed. Press and hold DONE to return the console to the current weather mode.

- Use the fastest Baud Rate your computer can handle. 19200 is the fastest Baud Rate available and is the default setting on the console.
- Press DONE when the correct Baud Rate displays on the console screen.

Note: The data logger does not require a constant connection with a computer to continue logging and storing data. Although the data logger should remain connected to the console at all times, the data logger needs to be connected to the computer only when data is being downloaded or when the computer is actively using data from the data logger. The data logger and console can be disconnected from the computer if they are placed in a location where the data logger cable cannot reach. However, WeatherLink's bulletin, summary, or other real-time window displays are accessible only if the data logger and console are connected to the computer.

Software Setup

It is easy to set up WeatherLink on your computer once the connection to your console has been configured. Walk through the following procedures to setup and configure your WeatherLink software and the connection to your console.

Running the Software

To run the software, double-click the **WeatherLink** icon. If no stations have been assigned in the program directory, the software prompts you to add a station (see below for details).

If this is a software upgrade and if there is more than one station in the program directory when the application opens, the last station that was displayed is automatically opened.

Station Setup

Each station connected to the computer must have its own station within the software. The software creates a database for the station and other station-specific information, and requires the necessary communication settings (communication type, etc) be provided.

Adding a Station

1. Select **New Station** from the **File** menu. The **New Station** dialog box displays.
2. Type the desired station name (up to 40 characters/spaces) into the **Station Name** text box. The software uses the first eight characters of the station name (not counting spaces or punctuation marks) as the name of the directory where it saves this station's database and configuration files. The first eight characters of each station name must, therefore, be unique.
3. Click **OK** to save the new station or click **Cancel** to exit without saving.

The software saves the new station, creates a directory and a configuration file for the station, and prompts you to enter the walk-through procedure.

About the Walkthrough

The software includes a station setup walkthrough that steps you through the weather station configuration procedures. After adding a new station, the **Walkthrough** dialog box automatically displays. By selecting **Yes**, the walkthrough begins. By selecting **No**, the Walkthrough is cancelled.

You can set up and configure your station by separately selecting all of the necessary setup options from the **Setup** menu. A Walkthrough option is included in the **Setup** menu that allows you to access the Walkthrough at any time.

Note: When necessary, the software automatically dials a phone modem station.

By selecting the Walkthrough process, the software displays a series of dialog boxes. At each step in the Walkthrough process, confirmation boxes are provided to perform or skip the next step in the Walkthrough. To continue, select **OK**. To skip this step and move to the next step, select **Skip**. To cancel the entire walkthrough process, select **Cancel**.

Note: Please refer to the WeatherLink Online Help for more information about the complete Walkthrough process.

Communication Port Settings

WeatherLink contains a dialog box for configuring the communication settings for your serial, USB, WeatherLinkIP data logger, or modem configuration. Use the **Communications Port** dialog box to select the communications type and to test communication between the computer and the station.

1. Select **Communications Port** from the **Setup** menu or use the Walkthrough to display the dialog box.

The **Communications Port** dialog box displays.

2. Select your data logger's communication type from the **Communications** field. The sections of the dialog box that pertain to the selected communication type become active.

Select **USB** in this field if you have a USB data logger and you are not using any third party applications.

Select **Serial** in this field only if you are using third party software or an application that requires communication via a COM port.

Provided below is an overview for connecting the Serial, USB or TCP/IP communications type in the **Communications Port** dialog box. Review the instructions for your selected communications type. See the WeatherLink Online

Help for more detailed instructions. Also, see the WeatherLink Online Help for complete instructions for your modem connection.

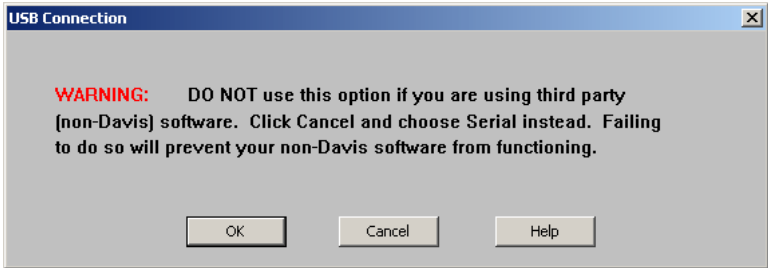
For Serial Communication

1. Select **Serial** from the communications field.
2. Select the communications port that connects the data logger to the computer from the **Com Port** drop-down list, or click **Auto-Detect** to find and select the correct COM port being used for your serial port connection.
3. Confirm that the **Baud Rate** drop-down list box is showing **19200** Baud. If it is not, click the drop-down list and select **19200**.
4. Click **Test** to verify communication.
5. Click **OK** to save the Communications Port settings.

For USB Communication

1. Select **USB** in the **Communications Port** dialog box only if you have a USB data logger and you are not using any third party applications.

When the **USB** radio button is selected, the **USB Connection** dialog box displays.



2. If you have a USB data logger that you would like to emulate a serial port connection *in order to run third-party applications*, click **Cancel**.

or

If you have a USB data logger and want to set up a direct link between the USB data logger and the software, click **OK**.

WeatherLink will create a direct USB connection, assigning the data logger a unique serial number. See the WeatherLink Online Help for more information.

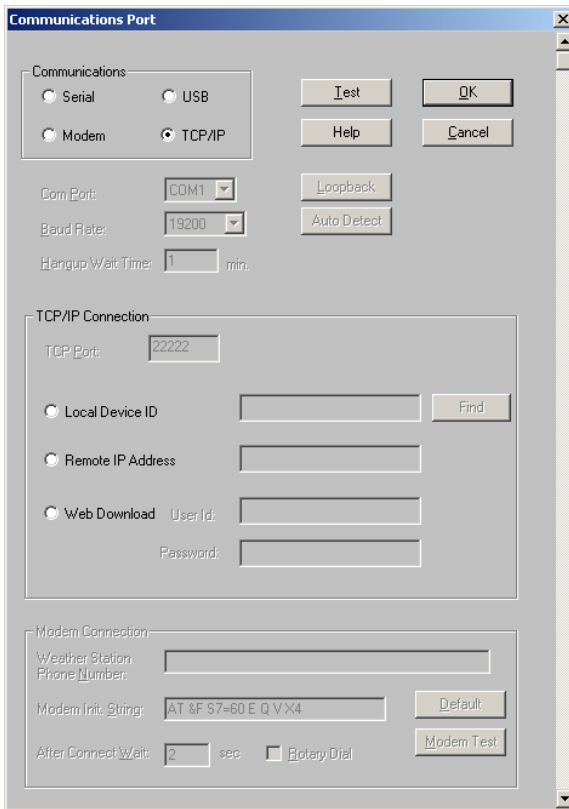
Note: Once the data logger has been assigned this unique serial number, it cannot be converted back to emulate a serial port connection within the software. Included with the WeatherLink software is a utility that allows you to convert a USB data logger from a direct USB data logger back to a USB data logger that emulates the serial port. To use this utility, select **Convert USB to Virtual Serial** in your WeatherLink program group on the Start menu of your computer (Start>AllPrograms>WeatherLink>Convert USB to Virtual Serial) and run the utility to convert your data logger. Please contact Davis Technical Support ("Contacting Davis Technical Support" on page 26) if you have any further issues.

3. Click **Test** to verify communication.
-

4. Click **OK** to save the Communications Port settings.

For WeatherLinkIP Communication

1. Select **TCP/IP** from the **Communications** field. The areas you need to define for TCP/IP communication become active in the dialog box.



2. Select one of the three available radio buttons that best describes the type of TCP/IP connection you want to setup:
 - **Local Device ID** — Connects to the WeatherLinkIP data logger through a Local Area Network connection. Use this option if your computer is connected to the same router or switch as your WeatherLinkIP data logger.
 - **Remote IP Address** — Connects the WeatherLinkIP data logger and station to the WeatherLink Software through a remote connection using an IP address. This connection generally requires a static IP address.

Note: This option is only used if your WeatherLink IP-equipped console or Envoy is at a location on the internet that is remote from the location of the computer on which you are running your WeatherLink software. It is an advanced setup option. See the WeatherLink Online Help for more information.

- **Web Download** – Downloads data collected from a console or Envoy connected to a WeatherLinkIP data logger via www.weatherlink.com.

For a Local Connection:

1. Click **Local Device ID**.
2. Click **Find** to find the Device ID for the data logger.
3. Click **Test** to verify communication.
4. Click **OK** to save the Communications Port settings.

For Web Download:

1. Click **Web Download**.
2. Enter the User ID and Password you created on www.weatherlink.com. See “WeatherLinkIP and Weatherlink.com” on page 10 for more information.
3. Click **OK** to save the web download settings.

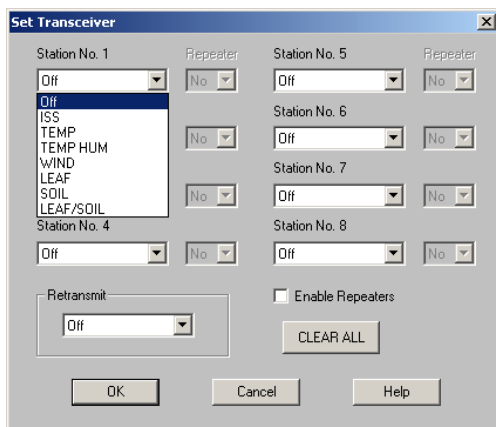
Set Transceiver

Use the **Set Transceiver** dialog box to view and/or configure your Vantage Pro or Pro2 console or Weather Envoy transmitter ID and repeater ID assignments and to control the retransmit function.

Note: Note: This dialog box is the only available tool for configuring the transmitter ID and repeater ID settings on your Weather Envoy.

To set transceiver options:

1. Select **Set Transceiver** from the **Setup** menu. The **Set Transceiver** dialog box displays.



If you have a Vantage Vue console, or a Vantage Pro2 console or Envoy with firmware dated May 2005 or later (or version 1.6 or later), the **Set Transceiver** dialog box displays with special functionality related to repeater use.

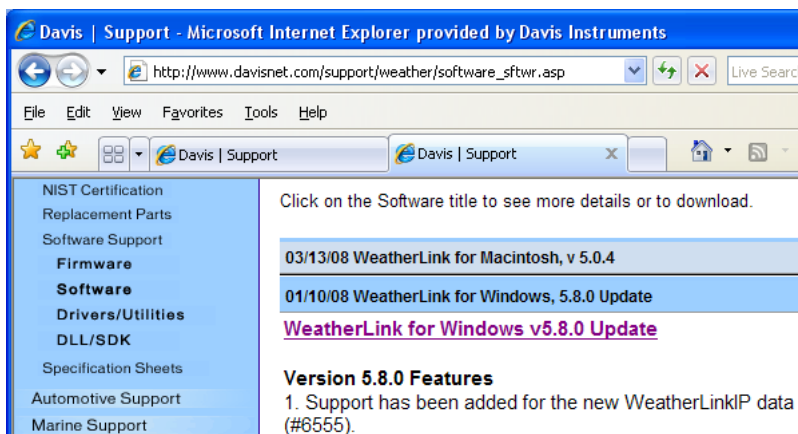
2. Select a Station Type for each of the possible 8 channels the Envoy may be receiving. See the WeatherLink Online Help System for more information on configuring the stations, the retransmit feature and configuring the Envoy for using repeaters.

Updating Previous Versions

Starting with Version 5.2, WeatherLink stores additional sensor data in the weather database. Data files from earlier releases do not contain the additional data and should be converted before use by the latest version of WeatherLink. The following procedure explains how to convert older WeatherLink data files for use with WeatherLink 5.2 and later versions. If you are updating from version 5.0 or 5.1, there are also instructions on how to retrieve additional existing data from your Vantage Pro data logger and incorporate it with your weather data files.

To update a previous version of WeatherLink:

1. Go to <http://www.davisnet.com/support/weather/>
2. In the left navigation area, click **Software Support**, then click **Software**.
3. Find the update version of WeatherLink you would like to install.
4. Click on the file name and the download link for the file displays. (See example, below.)



5. Click the download link and save the WeatherLink update file to the same folder location as your previous version of WeatherLink (for example, C:\Program Files\WeatherLink for versions 5.8.0 and later, or C:\WeatherLink for versions 5.7.1 and earlier and 5.9 and later).

Note: Since this procedure is specifically for updating previous versions of WeatherLink, make sure that a prior version of WeatherLink software is installed in the installation folder that you specify in Step 5, above. If a prior version of WeatherLink is not installed in that installation folder, the installation of this upgrade version may not work correctly.

6. Follow the instructions presented in the Setup Wizard screens to complete the installation of your update.

Database Conversion

If you have an existing weather database from WeatherLink 5.1 or earlier (including versions of WeatherLink 3 and 4), there are two ways to convert those files for use with versions of WeatherLink 5.2 or later.

Convert a WeatherLink Station (for 5.2 or later)

This method converts all the data files in an existing WeatherLink station directory and retains the previously entered station configuration data.

1. Install the new version of WeatherLink in a new program folder.
2. Copy the station folder from the previous WeatherLink program folder to a WeatherLink 5.2 or later program folder.
3. Use the **Open Station** command in the **File** Menu to open the copied station folder. WeatherLink automatically detects that the station was created by a previous version of the software and asks to convert the data and station.
4. Click **OK** to convert the station configuration, including weather database files. WeatherLink automatically creates a backup copy of the old files and then converts them for use by versions of WeatherLink 5.2 or later.

Import Database Files (for files created in version 5.1 or earlier)

The **Import Database Files** menu option allows you to select individual files or groups of files to be converted for use by WeatherLink 5.2 or later.

Note: WeatherLink does not import database files created by WeatherLink version 5.2 or later using the **Import Database File** option. This option only imports database files created by WeatherLink version 5.1 or earlier.

1. Open WeatherLink 5.2 or later and select **Import Database Files** from the **File** menu. The **Browse** dialog box displays.
2. Select the data files you want to import. Select one file or multiple files in the same folder.
3. Click **Open** to convert the selected files. These files are put into a subdirectory called "Converted Database Files".
4. Copy the converted files to your station directory.
5. Reopen the station in WeatherLink to view the converted files.

Retrieving Data From the Data Logger

The data loggers for Vantage Pro, Vantage Pro2, Vantage Vue and Weather Envoy contain data and weather variables that were not used by WeatherLink 5.0 or 5.1, such as UV, solar radiation, rain rate, and ET (evapotranspiration).

Versions of WeatherLink 5.2 or later allow you to view and use these variables that earlier versions did not. Depending on the archive interval used on your data logger, up to 200 days of this data which you can retrieve and incorporate into a version of WeatherLink 5.2 or later, may be stored on the data logger.

To incorporate this data into WeatherLink 5.2 or later data files:

1. Select **New Station** in the **File** menu and create a temporary weather station folder. (See Adding a New Station for more information)
2. Select **Download** in the **File** menu or click on the **Download** icon. WeatherLink does a full download of all data stored in the data logger.
3. Select **Browse** in the **Window** menu or click on the **Browse** icon.
4. Scroll to the beginning of the data file, and write down the time and date of the first entry in the database.
5. Open the original WeatherLink station using the Open Station option in the **File** menu.
6. Select **Browse** from the **Window** menu or click on the **Browse** icon.
7. Select **Delete Records** in the **Browse** Menu.
8. Select records for the days following the earliest date in the temporary station database.

Note: Do not select the records for the day the temporary database begins. Each record can be deleted individually for that day in the next step.

9. Individually select and delete each record in the database dated after the earliest record in your temporary database from the **Browse** Window.

Note: WeatherLink downloads data only for dates and times not already in the database. Deleting records allows it to download new data.

10. Select **Download** in the **File** menu or click on the **Download** icon to download data from the data logger.
11. Select **Delete Station** in the **File** menu and select the temporary station you created in Step 1 to delete it from the list of stations currently in use.

Recalculate THSW Index

WeatherLink versions 5.3 and later support a new derived data parameter, the Temperature Humidity Sun Wind (THSW) Index. If your station contains a solar radiation sensor, this value can be calculated for existing data by selecting **Recalculate THSW Index** in the **Browse** Menu, which is displayed when the Browse window is open.

Note: Be sure to verify that the latitude and longitude settings and daylight savings time settings are correct before using this command.

Troubleshooting Guide

The following section answers some of the most commonly asked questions about WeatherLink. Please consult this guide and the online help files before contacting Technical Support.

Communications Problems

If you are having trouble establishing communication between the weather station and WeatherLink, start by checking the console's own diagnostics. Remove all power to the console and restart it by restoring power (with the data logger still attached).

Note: The data logger uses nonvolatile memory, so any previously recorded data is still stored. However, put the console in Setup Mode (by pressing and holding DONE, then pressing the down arrow (-)) before removing power, so that no damage to the data logger occurs.

- A series of beeps sound from the console, each of which occurs when the weather station passes one of its diagnostic tests. Each beep follows the previous after about one second. For Vantage Vue, you should hear four beeps; for Vantage Pro or Pro2, you should hear three beeps; for Weather Envoy, you should hear two beeps.

Note: If you do not hear one or more of these beeps, contact Davis technical support.

- If the console sends four (Vantage Vue); three (Vantage Pro or Pro2) or two (Weather Envoy) beeps, see “Communication Port Settings” on page 14 for instructions on checking communication settings.

Troubleshooting Serial Port Communication

- If the port settings or the loop back test process identifies a serial port other than the one selected in station setup, try connecting to the data logger again.
- Check the serial port adapter if using a serial port connection. Use only the blue serial port adapter supplied with WeatherLink. Older models, or models not supplied in the WeatherLink connection kit, are not compatible.
- Check the Baud Rate setting on the console and in the **Communication Port** dialog box in the software. Make sure they have the same number. Enter the console's Setup Mode by pressing and holding DONE and then pressing the down arrow (-) on the console.
- Scroll through the setup choices by pressing BAR until you reach the Baud Rate screen. This screen appears only if the data logger is plugged into the console.
- Test the serial port using the provided loopback connector. Use the **Loop-back** button (as opposed to the **Test** button) in the **Communications Port** dialog box to test and find the correct serial port connection. If a communi-

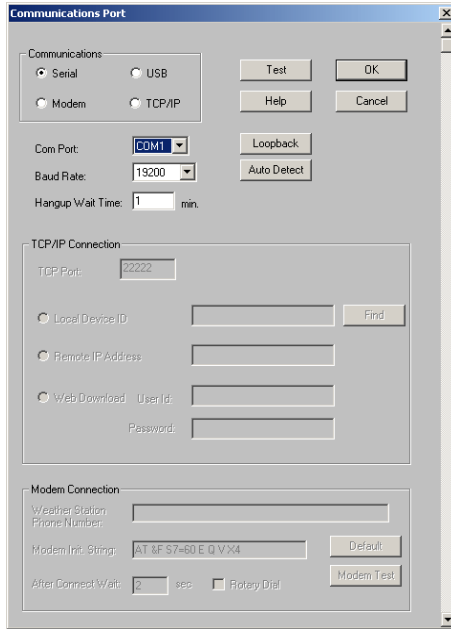
cations problem exists, it determines whether the serial port or the data logger is not communicating properly. The loopback function also detects and reports the presence of any modems.

Use the loopback connector (the short cable with a phone jack on one end and a red plastic tip on the other) supplied with a WeatherLink serial port connection package.



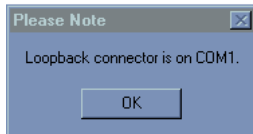
Loopback connector

1. If necessary, disconnect the cable between your console and the adapter connected to the COM port.
2. Insert the loopback connector into the adapter.
3. Select Communications Port from the **Setup** menu. The **Communications Port** dialog box displays.



4. Click **Loopback**.

The software searches all standard ports and displays the COM port number where the loopback connector is located.



The correct COM port is automatically selected in the **Communications Port** dialog box. If the loopback connector is not found on any COM port, your serial port may not be working. If a connection still does not exist or if

the loopback test identifies the same serial port you have selected, eliminate the following possibilities:

Note: Contact your PC vendor or technical support for more information on these device difficulties.

- **Hardware device conflict**—Check the **Device Manager** tab in the **Windows System Properties** dialog box to ensure that Windows recognizes the selected COM port. Consult your computer's documentation to see how to access the System Properties dialog box.
 - **The communication port uses a nonstandard device name**—WeatherLink recognizes serial ports named COM1 through COM18 only. To use a modem, specify the underlying COM port on your PC. To find out which port the modem's connected to, display Windows' System Properties > Device Manager > "modem name" Properties > Modem > Port, and check the listed "modem name" is the modem name you installed.
 - Your serial port is defective.
 - The loopback connector or the WeatherLink adapter plug is bad.
-

Note: See the WeatherLink Online Help if you are troubleshooting a Modem connection.

Troubleshooting USB Communication

- Close the WeatherLink software.
- Disconnect the USB cable from the console or Envoy.
- Plug the cable back into the console or Envoy.
- Open the WeatherLink software again.
- Open the **Communications Port** dialog box. Select **USB** if USB is not selected in the communications field and follow the prompts.
- Click **Test** to verify communication between the station and the software. If the test is unsuccessful, either the station is malfunctioning or the drivers for communicating with USB have not been installed successfully. To verify that the driver is installed, look in Windows' System Properties -> Device Manager -> Universal Serial Bus Controllers and see if the USBXpress Device is listed. If the driver is listed and there is still no communication between the station and the computer, call Technical support. If the drivers are not listed, contact Technical Support for instructions on installing the necessary drivers.
- If you are using a third party application that requires the USB connection to emulate a com port connection, see WeatherLink Online Help for more information or Contact Technical Support.

Troubleshooting WeatherLinkIP Communication

Note: A console using a WeatherLinkIP data logger requires use of the AC-power adapter. Battery power can be used for short-term backup power in the event of a power outage, but a console or Envoy with WeatherLinkIP should use the AC-power adapter as its main source of power.

1. See if you have a connection to the internet established. Verify that you can access a website from a computer connected to the router or switch that the WeatherLinkIP data logger is using.
2. Check the cable connection between your WeatherLinkIP data logger and the broadband router or switch. Check if the green light on the WeatherLink IP data logger is on.
3. Leaving the data logger connected to your router, disconnect power from both your router and your console or Envoy.
4. Return power to the router or switch. Wait for at least one minute as the router reboots and re-establishes connections.
5. Return AC power to the console or Envoy.
6. Check if the green light on the WeatherLink IP data logger is on. If it is not on, contact Technical Support.
7. **For Consoles Only** - Hold down the DONE key to exit the Setup Mode.
8. **For Weatherlink.com** - Wait five minutes. Go to www.weatherlink.com and register the WeatherLinkIP data logger using the Device ID and Key. If you have already registered, check that your My Weather page is currently being updated.
9. **For WeatherLink Software** - Open WeatherLink. Open the **Communications Port** dialog box. Select TCP/IP if TCP/IP mode is not already selected. Select the communications type under TCP/IP you wish to use.

For Local Connections Only

- In the **Communications Port** dialog box, select **Local Device ID** and click **Find**. If the data logger is communicating on the network, the **Communications Settings** dialog box displays the Device ID and IP address of your data logger. If the dialog box does not display, check connections and try again or contact Technical Support.
- Click **Test** to verify communication between the station and the software.

For Web Download Only

- In the Communications Port dialog box, verify that the User ID and Password are the same User ID and Password you used when you created your web account on www.weatherlink.com.

Program Problems

? *The barometer graph on the Bulletin does not "fill in" completely.*

When you first load the bulletin, the barometer graph will only fill in completely when you have data in your database for the last six hours. Make sure of the following:

- There is data in your database for the span of the barometer graph.
- The time and date of the stored barometer data is correct in your database.
- The time and date on the PC is correct.
- The time and date on the weather station are correct.
- In the **Station Configuration** dialog box, set the **Download archive data when Bulletin or Summary is started** drop-down box to **Always** or to **Confirm each time**.

? *No wind direction reading (or dashes instead of a reading) appears in my database.*

Be aware that if there is no wind speed when the direction is being sampled, wind direction is not recorded. During intervals with very little wind speed, no direction may be recorded.

Note: Because high wind speed is sampled more often, it is possible to have a high wind speed but no wind speed or direction.

? *WeatherLink says “No new data to download” but I know there’s data there. What can I do?*

The Vantage Pro2 system is smart enough to send only data it hasn’t already sent to the computer. So, when you initiate a new download, the program will retrieve the first record after the last record shown in the WeatherLink’s Browse Window. Older data may still be in the data logger, if you have not cleared its memory. To see how many of these older records are stored in the logger, create a new station and download the data into this new database. Because there are no records stored in the station you just created, WeatherLink will download everything it has stored.

Next, try clearing the archive memory using the clear dialog box. You will lose any data not already downloaded in your archive memory, but all of your calibration numbers and alarm settings will remain intact. If this doesn’t work, reboot your weather station (that is, remove and then restore all power to the station).

Note: Make sure to put the console in Setup Mode (by pressing the DONE and DOWN arrow keys) before removing the batteries. This ensures the station will remember the current daily high and low values and the daily rain and ET accumulation.

? *When viewing data, dashes appear in place of a value for functions other than wind direction. Why?*

If no data was recorded by a sensor (for example, the sensor was disconnected or radio interference blocked reception), or if bad data was recorded for a sensor (for example, the sensor was malfunctioning), the software dashes out the entry rather than showing invalid data. You can use the record editor to correct these entries.

? *The data I want to see, such as solar radiation, soil moisture, or Temp 2 does not display. Why?*

All optional sensors must be enabled in the **Station Configuration** dialog box before the data will be displayed in WeatherLink. If you are not seeing data from a sensor that is installed in your weather station, be sure check the **Station Configuration** in the **Setup** Menu and make sure the sensor has been selected.

Contacting Davis Technical Support

If you have questions about the software, or encounter problems installing or using the software, please contact Davis Technical Support. Most questions can be answered on the phone.

Note: Sorry, we are unable to accept collect calls.

Phone Support:

(510) 732-7814 – Monday – Friday, 7:00 a.m. – 5:30 p.m. Pacific Time.

(510) 670-0589 – Technical Support Fax

E-mail Support:

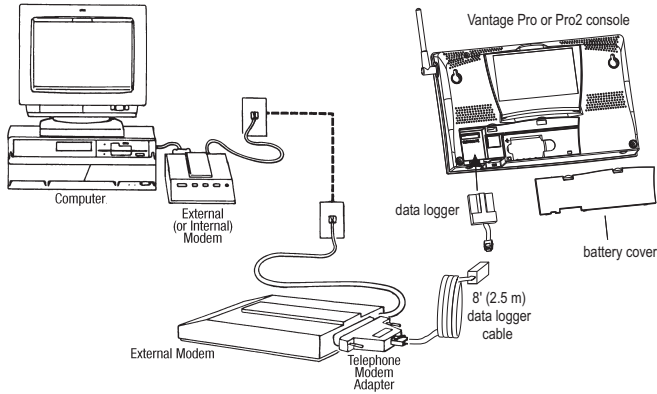
support@davisnet.com – Technical Support e-mail.

info@davisnet.com – General e-mail.

www.davisnet.com – Davis Instruments' website. Includes Weather support information.

Appendix: Remote Modem Installation

A remote modem installation is a connection from the data logger on the console or Weather Envoy to a modem that can be dialed and accessed from a computer. Use a remote modem installation to connect your computer to a remote console or Weather Envoy. r.



Using Modems to Connect Your Computer and Weather Station

Note: Before installing the console and modem at a remote location, test the data logger and connection first using a direct connection like that shown in the section above.

1. Install and set up an internal or external modem (according to the manufacturer's instructions) for use with your computer. Make a note of the COM port used by the modem. This information is used when using the **Communications Port** dialog box to connect to a console or Envoy.
 2. At the station console site, put the external modem in a location where it can connect to both the logger and a phone jack and plug it into the jack.
-

Note: Do not turn the modem on at this time.

The cable connecting the data logger to the modem is 8' (2.4 m) long. If necessary, use a 40' (12 m) standard 4-conductor extension cable to extend the connection between the console and modem. Do not attempt to use more than 40' of extension cable, or the data logger may have difficulty communicating with the computer.

3. Plug the external modem into the phone jack.
 4. **For consoles only:** Enter the console's Setup Mode by pressing and holding DONE, then pressing the down arrow (-). Entering Setup Mode ensures that the station is not writing any data and saves the current daily weather information to memory.
 5. Remove the battery cover from the console back and remove all power by removing the batteries and AC power adapter, if present.
-

Note: Failure to remove power to the console before installing the data logger may cause damage to the data logger or console. Plugging or unplugging the data logger while power is applied can damage or lock up the data logger.

6. Firmly insert the serial data logger into the receptacle marked EXPAN-SION inside the battery compartment.
 7. Guide the data logger cable through the square slot below the receptacle.
 8. Connect the Telephone Modem Adapter to the external modem.
-

Note: Do not use a DB-25 adapter (not included) and a gender changer to attach the logger to a modem. It will not work.

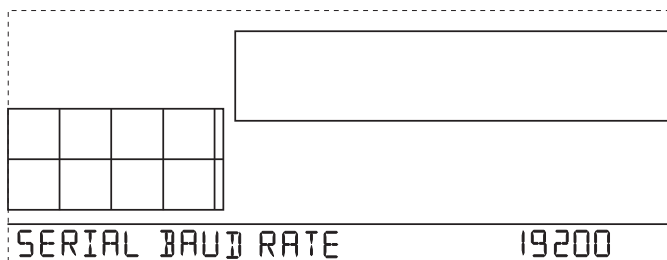
9. Insert the cable plug at the end of the cable into the Telephone Modem Adapter.
10. Turn the modem ON. Turning the modem on at this point allows it to receive the modem initialization string from the console.
11. Restore power to the console or Envoy by reinstalling the batteries and reattaching the power adapter, if present.

The console beeps three times; each beep occurring within one second of the others. Once power has been returned to the console, the Setup Mode is automatically displayed.

The Weather Envoy beeps two times, also occurring within one second of each other.

12. Replace the battery cover, so that the data logger cable exits through the square slot.
 13. Check the Baud Rate settings on the console. Press BAR to scroll to the Baud Rate settings screen, shown on the following page:
-

Note: The default value for the Baud Rate setting is 19200. If you have a Weather Envoy, this value should remain the same in the WeatherLink software. The Baud Rate settings screen displays only if the data logger has been installed.



The Baud Rate setting on the console must be same as that set in the Weather-Link software. Use the up (+) and down arrows (-) to change the Baud Rate setting, if needed. Press and hold DONE to return the console to the current weather mode.

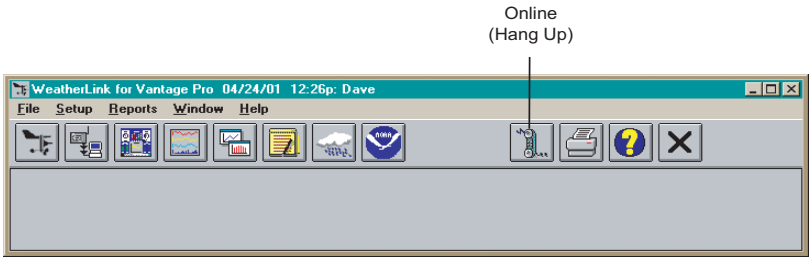
- Use the fastest Baud Rate your modem can handle. 19200 is the fastest Baud Rate available and is the default setting on the console.
- Press DONE when the correct Baud Rate displays on the console screen.
Pressing DONE in this screen sends the initialization string to the modem, so you don't have to turn the console on and off again.

Remote Modem Connection Notes

When accessing a remote modem connection, WeatherLink automatically dials the station and console whenever an action has been performed in the software that requires it to talk to the station.

While connected to a remote station, an **On-Line** icon displays in the tool bar. This icon indicates that WeatherLink has established a connection with the remote console and weather station.

To disconnect the phone connection, select the **On-Line** icon from the tool bar or select Hang Up from the **File** menu.

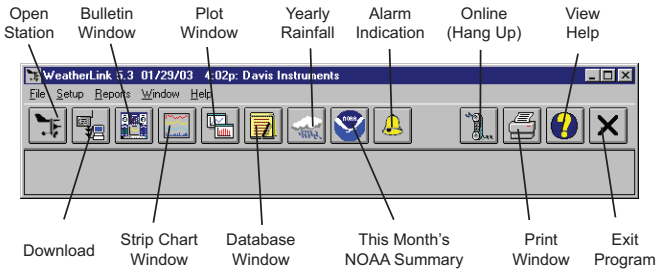


Toolbar with On-Line Icon

By default, WeatherLink disconnects from the modem after one minute without any communication with the station. Use the **Communications Port** dialog box in the **Setup** menu of WeatherLink to change this default value. (See the WeatherLink Online Help for more information.)

Note: WeatherLink does not hang up the phone line if the bulletin, summary, or other windows receiving real-time data from the console are active.

Tool bar Icons



Hot Keys

Main Program Window

- Ctrl-A** Set Alarms
- Ctrl-B** View Bulletin
- Ctrl-C** Station Configuration
- Ctrl-G** Degree-Days Report
- Ctrl-H** Hang Up
- Ctrl-I** Communications Port Settings
- Ctrl-J** Automatic Download
- Ctrl-K** Walkthrough
- Ctrl-L** Download
- Ctrl-O** Open Station
- Ctrl-P** Print Active Window
- Ctrl-Q** Open Plot Window
- Ctrl-R** Yearly Rain Report
- Ctrl-S** Open Strip Charts
- Ctrl-T** Set Time
- Ctrl-U** Select Units
- Ctrl-V** View Download Log
- Ctrl-X** Auto Fax Settings
- Ctrl-Y** View Summary
- Ctrl-Z** Close Window
- F1** Context-Sensitive Help
- F2** Sunrise/Sunset Report
- F7** NOAA This Month
- F8** NOAA This Year

Strip Chart Window

- ESC** Halt Redraw
- Ctrl-M** Make Default
- Ctrl-P** Print Strip Chart
- F1** Context-Sensitive Help
- F3** Zoom In
- F4** Zoom Out

Plot Window

- ESC** Halt Redraw
- Ctrl-D** Choose Date
- Ctrl-M** Make Default
- Ctrl-P** Print Plot
- F1** Context-Sensitive Help
- F3** Zoom In
- F4** Zoom Out
- F9** Overlay Plots
- F10** Last Year Plot

Database Window

- Ctrl-D** Choose Date
- Ctrl-N** Add Note
- Ctrl-P** Print Records
- Enter** Edit Record
- Delete** Delete Record
- F1** Context-Sensitive Help

Yearly Rainfall Window

- Enter** Edit Year
- Delete** Delete Year