

# C555 HANDHELD CONCRETE MOISTURE METER KIT



The C555 Concrete Moisture Meter provides fast, non-destructive preliminary moisture measurements on smooth, firm concrete to help pinpoint problem areas and determine where to place Rapid RH® L6 Smart Sensors.

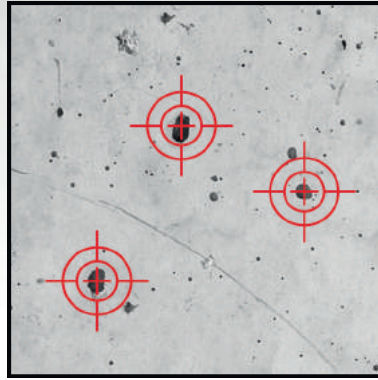
- With its built-in ambient sensors and On-Demand Calibrator, the C555 comes with everything you need to perform the test outlined in ASTM F2659.
- Relative mode can be used on other materials such as concrete block.
- 1-year warranty.

## METER FEATURES:

- ASTM F2659 compliant
- Digital display
- Measures to 0.5-inch depth
- Built-in sensors measure ambient temperature and relative humidity
- Moisture scale reads from 0% to 6.9%
- Audio threshold alarm
- Relative mode can be used on other concrete-similar materials such as concrete block
- Scuff-resistant Teflon™ sensor pad

## KIT INCLUDES:

- C555 Concrete Moisture Meter
- Paired On-Demand Calibrator
- Rubber Protective Boot
- Foam-lined ABS Plastic Carrying Case
- 9V Battery
- Instruction Manual



## WHEN TO USE A C555 CONCRETE MOISTURE METER

We believe the most useful application of the C555 Concrete Moisture Meter is to support the most effective placement of Rapid RH® L6 Smart Sensors according to the processes outlined in ASTM F2659. Also, the built-in temperature and relative humidity sensor will give you ambient readings to assist with your ASTM F2170 reporting. However, there are certainly more uses for the C555 that don't necessarily require the strict oversight of ASTM or other established regulations. Bearing in mind that the C555 is a qualitative measuring device, there are other applications that can benefit from comparative moisture data collection of concrete or similar materials. At this point, it's important to point out that, because the C555 utilizes an abrasion-resistant sensor pad to emit an electronic signal, the surface you are measuring **MUST** be smooth enough to assure complete contact with the entire surface of the sensor pad. Scanning over any raised areas or scanning on materials that do not contact the entire surface of the sensor pad may result in misleading or inaccurate readings. With all this in mind, consider using the C555 in these applications:

- If a leak, high humidity levels, or recent flooding have you questioning whether that old slab is dry, the C555 will tell you pretty quickly. Simply measure a section of concrete that you know is dry, then measure sections of the concrete slab to get a better map of the scope and intensity of the moisture intrusion into the concrete slab.
- Relative indication of moisture intrusion on other materials such as:
  - Brick
  - Cement
  - Gypsum
- Ambient temperature and relative humidity monitor.
- If you need a quick reading of ambient conditions, press the "MODE" button 4 times and the C555 screen will alternate between showing temperature and relative humidity every 3.5 seconds.



**WWW.WAGNERMETERS.COM**  
**CALL (844) 746-3764**